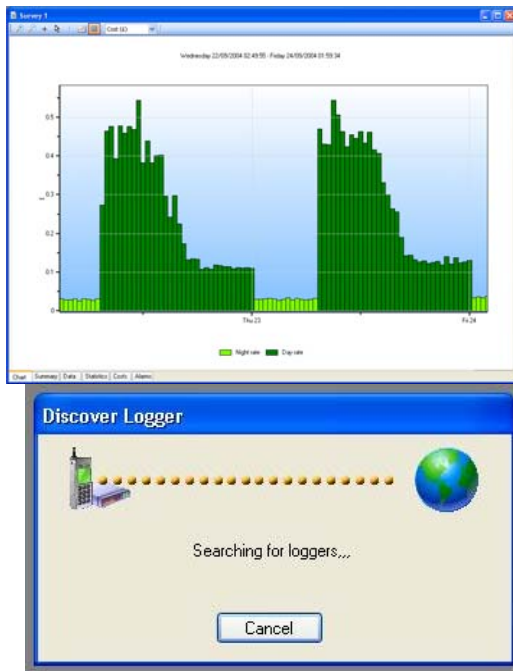


SPCmini

ELECTRICAL ENERGY PROFILE LOGGER

- ✓ **Low Cost**
- ✓ **Simple to Use**
- ✓ **Bluetooth® Comms**
- ✓ **Includes PC Software**
- ✓ **£249.00 Complete!**



The SPCMini and its dedicated PC software package 'PowerPackPro' combine new technology and years of experience into an unbeatable low-cost package.

It has a large clear display, a massive 'Flash' memory and set-up and data download is via an integrated Bluetooth® communication chip, compatible with virtually any PC running Windows. The SPCMini is also extremely versatile and will provide accurate results on loads as small as 2 amps, right up to a maximum of 500 amps. The logging interval is fully adjustable from 1 second all the way to 30 minutes for ultra-long-term surveys.

The SPCMini is easy to use – clip it on, check the load with the on-board display, set it to log, press the start button and you're done! It's also clever – it won't overwrite any previous surveys without warning you, and the logger electronics auto-ranges to ensure the highest levels of measurement accuracy at all times. Connection to the PC is via Bluetooth® – just like a mobile phone – so there's no need to plug cables into hard to reach sockets.

The 'PowerPackPro' PC software package has been developed specifically for the SPCMini. It's a 'task oriented' package, so even if you are not an expert in electrical energy it will always guide you in the right direction so that you will achieve accurate reporting first time, every time. It provides full set-up and control for the SPCMini allowing you to define your survey period and/or data storage rate. It automatically checks the SPCMini battery condition and clock settings and warns you if there is a problem with either. It also warns if data which has not been downloaded are about to be overwritten.

Once data have been downloaded for the logger, PowerPackPro does a lot more than simple graphing. The graphs are fully 'zoomable' in both axes, and have automatic scaling so your results are always effectively presented. Our unique 'Data Logging' wizard ensures that the energy values (kWh) that are derived from the SPCMini are always as accurate as possible, and also include all relevant set-up information on any reports that are created.

The integrated energy costing capability allows multiple multi-rate tariffs to be entered to convert load profiles into accurate cost profiles, as well as enabling tariff comparisons to be made with real data.

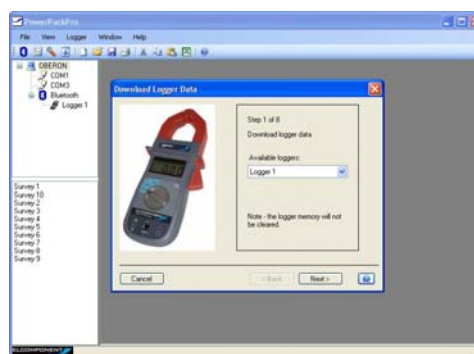
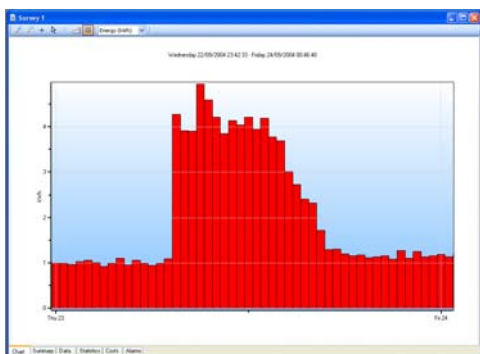
Specification		Notes
Connection	Single Channel Current Logger	
Measured Parameters	Amps – 2 Scales (autoranging) 2A – 500A	
Derived Parameters	kW, kWh, Cost	
Accuracy	+/- 1% of measurement +/- 0.5% of Scale	
Storage Rate	1 second to 30 minutes	
Storage Capacity	1 minute for 1 month	45000 records
Memory	Flash (non-volatile)	
Battery Life	Minimum 2 months logging	PP3 Alkaline
Cable Diameter	35mm	
Display	3.5" digit LCD	
Software	PowerPackPro	Requires min: Pentium III with SVGA and Bluetooth®. Windows XP recommended

PC Specification:

The SPC Mini has a large memory capacity and also utilises Bluetooth as its communication and data transfer protocol. This requires a PC of the following minimum specification to make best use of the product's capabilities.

Windows: Windows XP Home or Professional
Processor: Pentium 4 or Centrino mobile 2.0 GHZ+
RAM: 256MB
Display: 32 bit colour 1024 x 768 minimum
Bluetooth: Pre-installed or via unused USB port.

A lower spec PC may provide satisfactory performance, but Bluetooth pairing will take longer, and the graphing capability, particularly with larger surveys will be slower. PCs running W2000 will also function with the SPC Mini and PowerPackPro, at the user's discretion.



Description	Notes	1+
SPCmini Standard	SPC Mini, PPP Software, PP3 Battery	£249.00
SPCmini Full Kit	SPC Mini, PPP Software, PP3 Battery, Carry Case, Bluetooth Adaptor	£269.00
Cable Splitter		£29.00
Accessory Kit	Bluetooth Dongle/Carry Case	£24.50
Carry Case		£9.95
Bluetooth Adaptor		£14.95